

Sure Start Children's Centre

Milton Keynes

Core Terms of Reference Management Groups

Insert description of centre and linked sites

Core Purpose – suggested text

The partners will develop progressively integrated services for children's care, education, health and well-being in consultation with parents and carers to achieve improved outcomes in line with Government frameworks and public service agreements, summarised within the Every Child Matters Agenda as:

- *being healthy*
- *staying safe*
- *enjoying and achieving*
- *making a positive contribution*
- *achieving economic well-being*

Role Of Management Group - suggested text

The Children's Centre Management Group provides management, support and guidance, and will include representatives from all partners. The group will be accountable to the school governors, SureStart, parents, children, the local community, the local authority and OfSTED, meeting national standards and regulatory requirements.

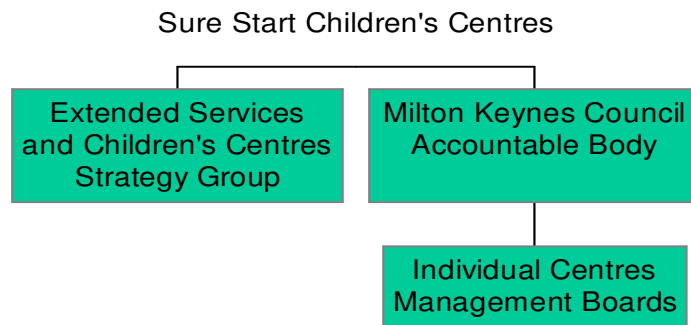
Insert following where on site daycare and education is provided:

Children attending care and early education will receive Early Years Foundation Stage Curriculum (0-5), where a consistently high standard of care and education will be delivered by recognising that:

- care, education, health and well-being have equal importance
- services should be seamless, flexible and adaptable, designed to encourage access, acknowledging the diverse needs of the local community; signposting to relevant local services will be part of the offer
- children's rights and entitlements are paramount, including a commitment to the inclusion of children and parents in challenging circumstances
- parents are the decision makers
- staff, with differing expertise, will plan, work and evaluate together, and information will be shared and confidentiality observed

Responsibilities

The Headteacher, staff and Governing Body, will be responsible for ensuring the core offer is developed and maintained working with their Area Co Ordinator and Outreach Worker. Milton Keynes Council through its Sure Start and Community Learning section is the accountable body.



Professional development and inter-agency training will be offered to staff and volunteers. Staff from all agencies and volunteers working in Children's Centre are required to respect and adhere to the policies of the Children's Centre

April 2007